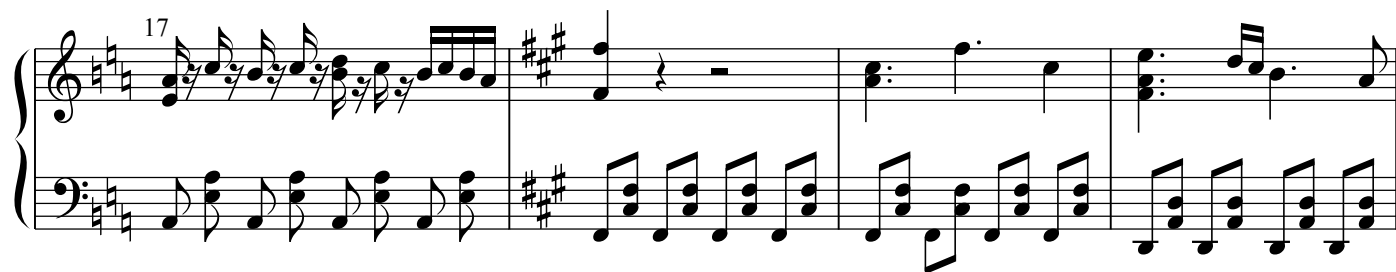
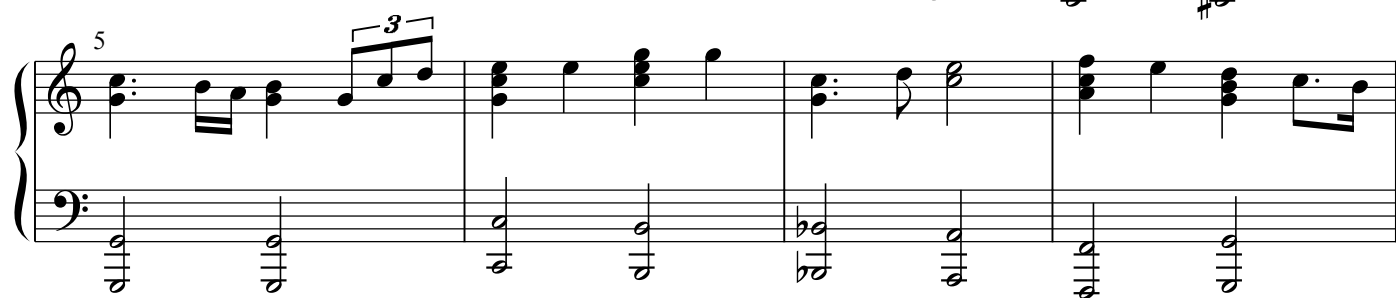
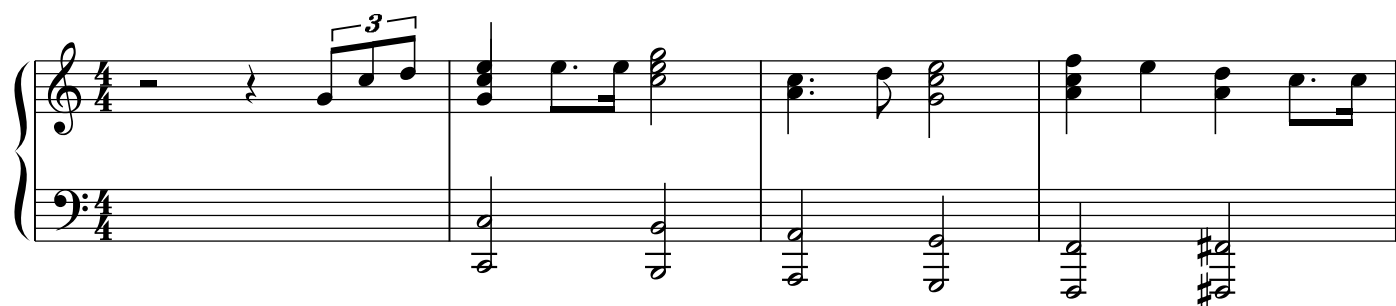


自由の翼



25

Measures 25-28. Treble clef: Chords (F#4, C#5) and eighth-note patterns. Bass clef: Steady eighth-note accompaniment.

29

Measures 29-32. Treble clef: Chords (F#4, C#5) and eighth-note patterns. Bass clef: Steady eighth-note accompaniment.

33

Measures 33-36. Treble clef: Chords (F#4, C#5) and eighth-note patterns. Bass clef: Steady eighth-note accompaniment.

37

Measures 37-40. Treble clef: Chords (F#4, C#5) and eighth-note patterns. Bass clef: Steady eighth-note accompaniment.

41

Measures 41-44. Treble clef: Chords (F#4, C#5) and eighth-note patterns. Bass clef: Steady eighth-note accompaniment.

45

Measures 45-48. Treble clef: Chords (F#4, C#5) and eighth-note patterns. Bass clef: Steady eighth-note accompaniment.

49

53

57

31

3

61

65

69

73

77

81

85

89

93

97

101

105

109

113

117

121

125

129

133

137

141

145

149

153

157

161

165

169

Measures 169-172. The key signature has one flat (B-flat). The right hand features chords and eighth notes, while the left hand plays a steady eighth-note accompaniment.

173

Measures 173-176. The key signature changes to two sharps (F# and C#). The right hand has chords and eighth notes, and the left hand continues with eighth notes.

177

Measures 177-180. The key signature changes to three sharps (F#, C#, and G#). The right hand has chords and eighth notes, and the left hand continues with eighth notes.

181

Measures 181-184. The key signature remains three sharps. The right hand has chords and eighth notes, and the left hand continues with eighth notes.

185

Measures 185-187. The key signature remains three sharps. The right hand has chords and eighth notes, and the left hand continues with eighth notes.

188

Measures 188-191. The key signature remains three sharps. The right hand has chords and eighth notes, and the left hand continues with eighth notes.

193

System 1, measures 193-196. The key signature is three sharps (F#, C#, G#). The right hand features chords and a melodic line with a long note in measure 195. The left hand has a steady eighth-note accompaniment.

197

System 2, measures 197-200. The right hand has a sparse melody with rests. The left hand continues with a consistent eighth-note pattern.

201

System 3, measures 201-204. The key signature changes to two sharps (F#, C#) starting in measure 202. The right hand has chords and a melodic line. The left hand continues with eighth-note accompaniment.

205

System 4, measures 205-208. The right hand includes a triplet of eighth notes in measure 206. The left hand continues with eighth-note accompaniment.

209

System 5, measures 209-212. The right hand has a melodic line with eighth notes. The left hand continues with eighth-note accompaniment.

213

System 6, measures 213-214. The right hand has a single note in measure 213 followed by a whole rest. The left hand has a single note in measure 213 followed by a whole rest.