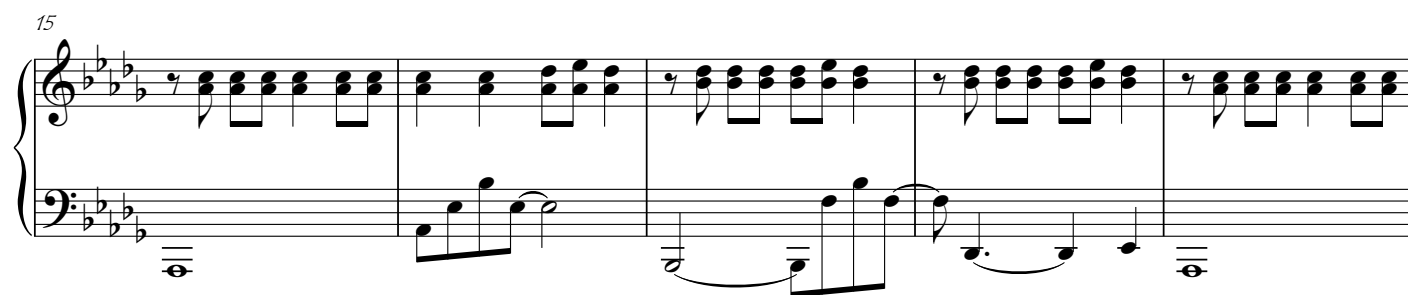
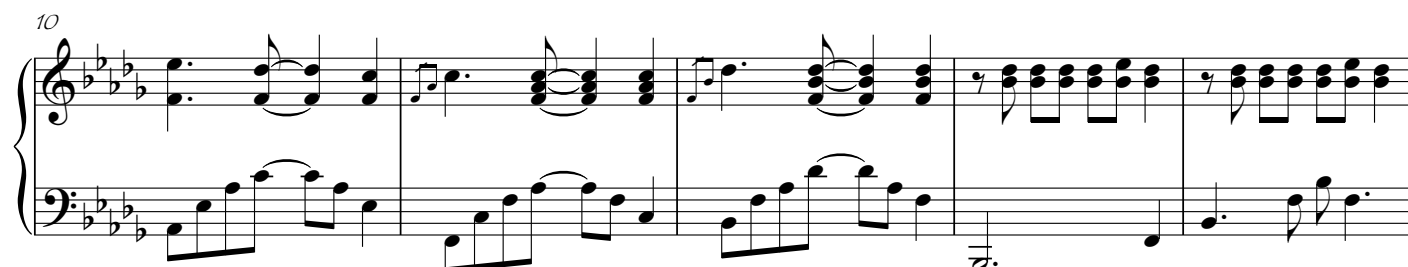
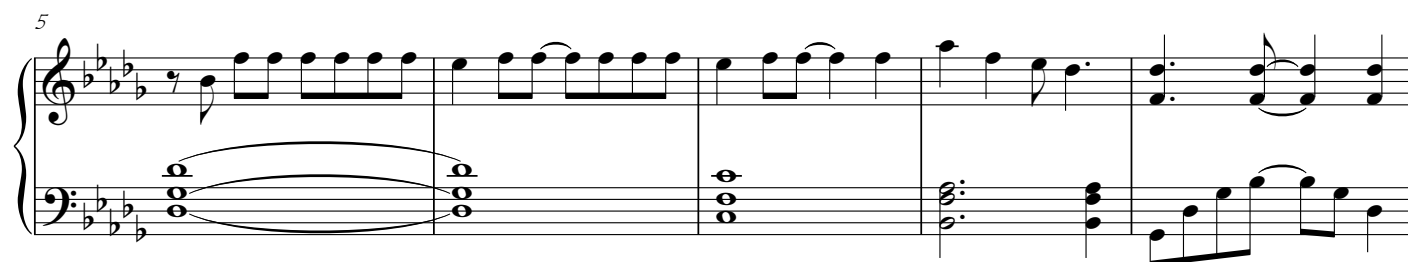


NightmaRe

Jigoku Shoujo Futakomori

Arranged by gon1choko1
Transcribed by Snomits

♩ = 136



25 ♩ = 140

Measures 25-29. The key signature has four flats (B-flat, E-flat, A-flat, D-flat). The melody in the right hand consists of chords and eighth-note patterns. The bass line features a descending eighth-note scale in measures 25-26, a whole note chord in measure 27, and an ascending eighth-note scale in measures 28-29.

30

Measures 30-34. The right hand continues with chords and eighth-note patterns. The bass line features an ascending eighth-note scale in measures 30-31, a descending eighth-note scale in measure 32, and an ascending eighth-note scale in measures 33-34.

35

Measures 35-39. The right hand features chords and eighth-note patterns. The bass line continues with an ascending eighth-note scale in measures 35-36, a descending eighth-note scale in measure 37, and an ascending eighth-note scale in measures 38-39.

40

Measures 40-44. The right hand features chords and eighth-note patterns. The bass line continues with an ascending eighth-note scale in measures 40-41, a descending eighth-note scale in measure 42, and an ascending eighth-note scale in measures 43-44.

45

Measures 45-49. The right hand features chords and eighth-note patterns. The bass line continues with an ascending eighth-note scale in measures 45-46, a descending eighth-note scale in measure 47, and an ascending eighth-note scale in measures 48-49.

50

Measures 50-54. The right hand features chords and eighth-note patterns. The bass line continues with an ascending eighth-note scale in measures 50-51, a descending eighth-note scale in measure 52, and an ascending eighth-note scale in measures 53-54, ending with a double bar line.